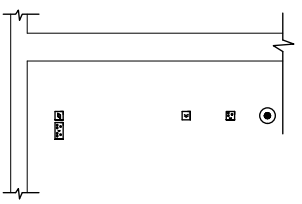
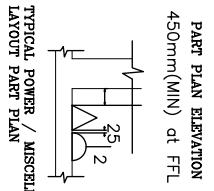
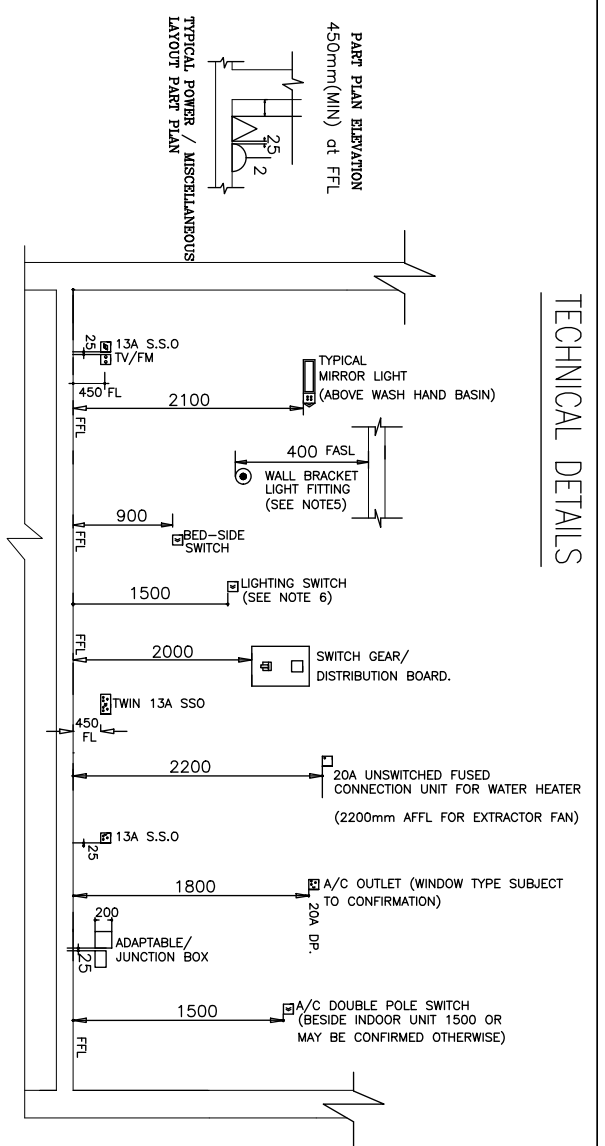


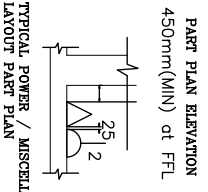
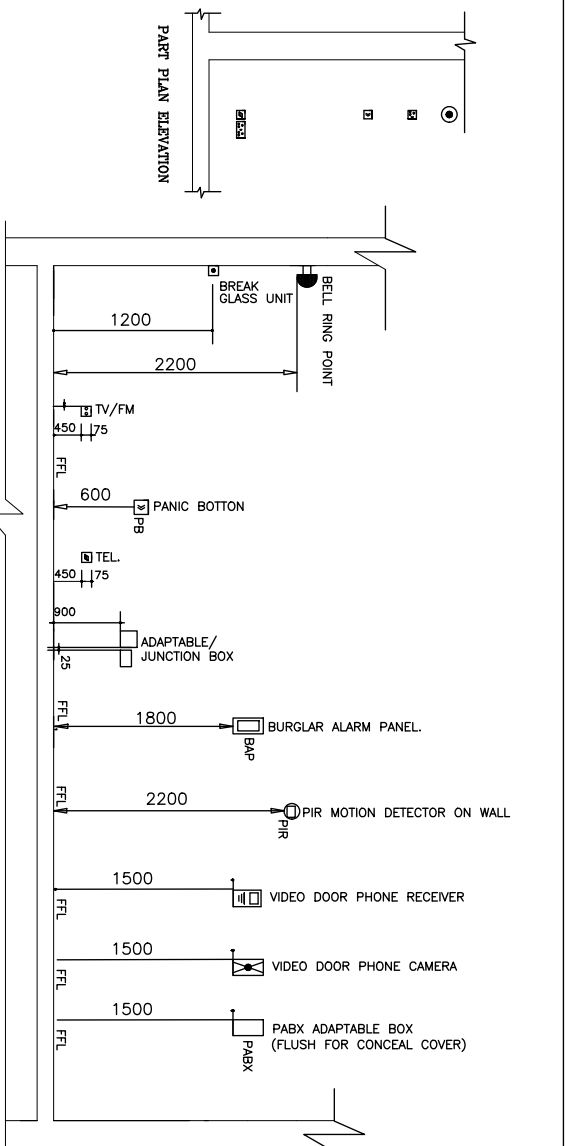
# TECHNICAL DETAILS



## NOTE :

- FL FINISH LEVEL
- FASL FROM ABOVE SLAB LEVEL
- FFL FINAL FINISH LEVEL
- AFFL AFTER FINISH FLOOR LEVEL

APPROVAL COLUMN



Project:

# LAGOS HOMES

LAGOS HOMES Agencies:

- New Town Development Authority (NTDA)
- Ministry Of Housing (MOH)
- Lagos State Development & Property Corporation (L.S.D.P.C)
- Project Implementation Monitoring Unit (PIMU)



## LAGOS STATE GOVERNMENT

DEVELOPER:



**LAGOS STATE DEVELOPMENT AND PROPERTY CORPORATION**  
 2/4 Town Planning Way, Ilupeju, P.M.B 21050 Ikeja, Lagos  
 Email: info@ldpc.gov.ng  
 Website: http://www.ldpc.gov.ng

NOTES & SPECIFICATION

1. THE DRAWINGS AND THE DESIGNS OBTAIN THEREIN SHALL BE THE PROPERTY OF THE DEVELOPER AND COPYRIGHT IS RESERVED.
2. ALL DIMENSIONS ARE TAKEN FROM CENTRE LINES UNLESS OTHERWISE SPECIFIED.
3. ALL DIMENSIONS MUST BE CHECKED ON SITE.
4. THE SETTING OUT OF THIS BUILDING MUST BE APPROVED BY THE ARCHITECT OR DESIGNATED REPRESENTATIVE ON SITE.

REVISIONS

NO.	DATE	DESCRIPTION

Design by

LAGOS HOMES SERVICES TEAM

Scale

Date

Sheet No.

00A

Seal:

LAGOS HOMES SERVICES TEAM

Scale

Date

Sheet No.

00A